

**THE METROPOLITAN MUSEUM OF ART**  
**NEW YORK**  
**1000 Fifth Avenue**  
**New York, New York**  
**10028**

The Metropolitan Museum of Art is one of the largest and finest art museums in the world. Its collections include more than two million works of art -- several hundred thousand of which are on view at any given time -- spanning more than 5,000 years of world culture, from prehistory to the present.

This site is designed to give visitors an overview of the collections on display in the Museum's galleries. Also available are a [Floor Plan](#), which includes information on services for visitors, and the [Calendar](#), which offers a detailed current listing of [special exhibitions](#), concerts, lectures, films, and other Museum activities, and the [Gift and Book Shop](#), with over 100 of our best-selling items available. The Metropolitan Museum of Art Guide, an illustrated handbook that is for sale in all of the Museum's shops, provides more information about the collections.

---

## **Lita Annenberg Hazen and Joseph H. Hazen**

### **Center for Electronic Information Resources**

Situated within the [Thomas J. Watson Library](#), a state-of-the-art electronic resource center -- the [Lita Annenberg Hazen and Joseph H. Hazen Center for Electronic Information Resources](#) has opened at The Metropolitan Museum of Art.

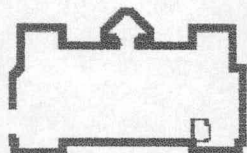


**THE APOLLO CIRCLE**  
*Young Friends of*  
*The Metropolitan Museum of Art*



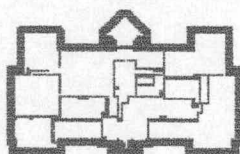
# Collections

Please choose the floor of the museum that you would like to explore



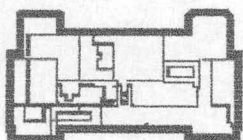
Ground Floor

Robert Lehman Collection; The Photograph and Slide Library; Ruth and Harold D. Uris Center for Education; Garage



First Floor

The American Wing; Arms and Armor; Arts of Africa, Oceania, and the Americas; Egyptian Art; European Sculpture and Decorative Arts; Greek and Roman Art; Robert Lehman Collection; Medieval Art; 20th Century Art; Special Exhibition Galleries; Great Hall; Thomas J. Watson Library; The Grace Rainey Rogers Auditorium; Museum Restaurant; Shops



Second Floor

The American Wing; Ancient Near Eastern Art; Asian Art; Drawings, Prints and Photographs; European Paintings; European Sculpture and Decorative Arts; Greek and Roman Art; Islamic Art; Musical Instrument 20th Century Art; Shops

- **The Cloisters**
- **The Met and the New Millennium**  
by Philippe de Montebello, Director



## Education Programs

### Programs for Museum Visitors

The Museum presents a variety of regularly scheduled programs related to exhibitions and the collections:

■ **Walking tours** of the Museum's collections (free with admission contribution) are offered daily and on weekends by Museum-trained volunteers. Tours start at the Walking Tour Stanchion in the Great Hall. No tours November 27 through 30, December 22 through January 5, 1998.

See a [weekly schedule](#) of walking tours.

■ **Gallery talks** are presented by Museum curators, conservators, educators, outside scholars, and advanced students of art history. All talks start at the Gallery Talk Stanchion in the Great Hall.



See [Calendar](#) listing of topics currently available.

■ **Lectures** by Museum curators, conservators, educators, outside scholars, and artists are presented Friday evening and Sunday from mid-September through June (admission to most Friday evening lectures by ticket only, available 5:00 p.m. at Uris Center Information desk). These lectures are free with admission contribution.

See [Calendar](#) listing of topics currently available.

■ **Subscription lectures** by leading authorities on art, music, and historical topics and **concerts** are presented weekdays and evenings from October through May. Attendance to these programs require a fee and are listed in the **Calendar** as well as described in the **Concerts and Lectures brochure** available at the Information desk.

See [Calendar](#) listing of programs currently available.

■ **Films and documentaries on art** are offered throughout the week. Saturday films shown at 4:00 and 6:30 p.m. require tickets: they are free with admission contribution, available at the Uris Center Information desk one hour before screening. *Supported by F.M. Kirby Foundation*

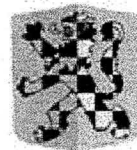
See [Calendar](#) listing of programs currently available.

■ **Symposia** accompany select exhibitions. They are free with Museum admission. No tickets or reservations are necessary.

The Apollo Circle, Young Friends of The Metropolitan Museum of Art, is for individuals ages 21 to 35

---

THE MET FAMILY CIRCLE



**MET NET MEMBERSHIP**  
*for Internet Visitors to the Museum*

A new membership category has been created just for you, our Internet visitors. Please visit our [Membership Page](#) for information. To order a Membership online, please enter the [Museum Gift Shop](#). If you are already a Met Net Member and would like to access your on-line benefits, please [click here](#).

---

[Home](#) [Membership](#) [Calendar](#) [Collections](#) [Info](#) [News](#) [Shop](#) [Education](#) [FAQ](#)

[Home](#) [Membership](#) [Calendar](#) [Collections](#) [Info](#) [News](#) [Shop](#) [Education](#) [FAQ](#)



*Please visit our*  
**Sponsors Page**

(c) 1998 The Metropolitan Museum of Art.



See [Symposia](#) for a listing of upcoming events.

---

**HOME** \* [For Kids](#) \* [Looking at Art](#) \* [Exhibits](#)  
[Education](#) \* [Programs](#) \* [Resources](#) \* [Indexes](#)

[Education](#) [Home](#) [For Kids](#) [Looking at Art](#) [Exhibits](#) [Programs](#) [Resources](#) [Indexes](#)

[Home](#) [Membership](#) [Calendar](#) [Collections](#) [Info](#) [News](#) [Shop](#) [Education](#) [FAQ](#)

[Home](#) [Membership](#) [Calendar](#) [Collections](#) [Info](#) [News](#) [Shop](#) [Education](#) [FAQ](#)

© 1998 The Metropolitan Museum of Art